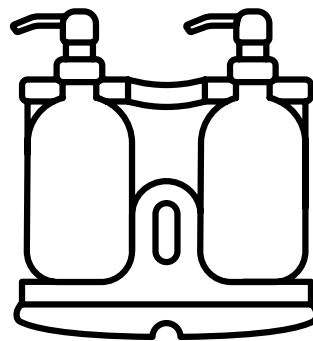


KUISHI

INSTALLING YOUR KUISHI BOTTLE HOLDER



Elegant and minimalist, our stainless-steel wall-mounted holders declutter your worktops and cohesively work with the style of your space. Functional, adjustable and durable, they **fit all Kuishi bottles from 250ml to 500ml** in size and can be used to pump the product of your choice.

Using your own bottle?

Our holders are **compatible with Aesop, Meraki and Molton Brown bottles**.

The holders are easy to fit. Over page are simple instructions to help you install yours.

For best results, we recommend seeking a professional to install your bottle holder
(please note that Kuishi cannot install it).

WHAT YOU'LL NEED

To fit your bottle holder, you'll need:

- **Wall-mounted holder** (provided)
- **Wall plugs** (we have provided you with standard wall plugs, but you may require a different type depending on the surface you are attaching it to)
- **Screws** (provided)
- **Allen key** (provided)
- **Drill**

Please note that, due to variances in surface types, Kuishi cannot guarantee the fixings supplied.

CHOOSING A LOCATION

Our bottle holders are ideal for being mounted above a work surface or basin, or in a shower area.

Below we've provided tips to help you choose the best spot.

ABOVE A WORK SURFACE OR BASIN

We recommend placing the holder at least 10cm away from the work surface or basin.

Be sure to leave enough space around the holder so you can easily refill the bottles.

IN A SHOWER AREA

We recommend fitting the holder close to the shower head so that it is within easy reach of the shower user. A corner is ideal to prevent knocking into it.

It should be at least 100cm from the floor.

Be sure to leave enough space around the holder so you can easily refill the bottles.

Now onto the installation...

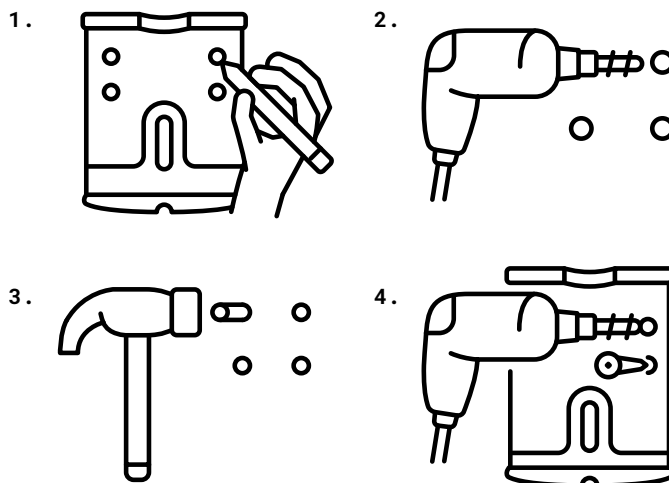
SIMPLE INSTALLATION STEPS

FIXING THE WALL-MOUNTED HOLDER

Thoroughly clean and dry the area you intend to fix the holder to.

To install the holder:

1. Mark your drilling holes, holding the wall mount in the desired spot as a guide
2. Drill carefully into the wall, as per the marks
3. Gently hammer the wall plugs into the drilled holes
4. Align the holder, then insert the screws and drill them into position



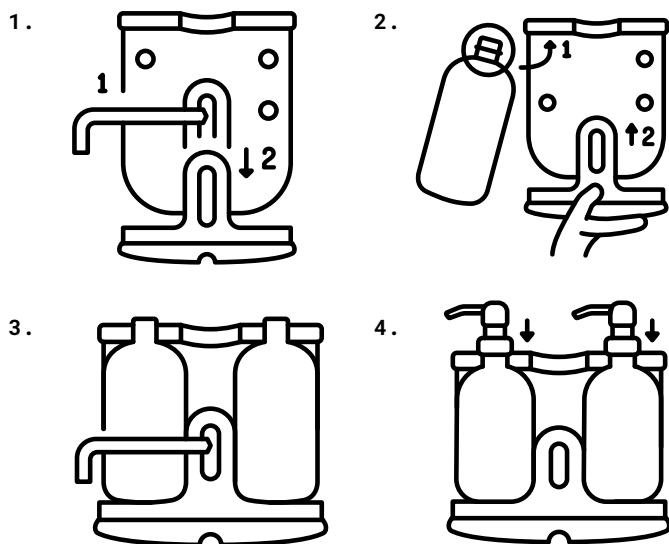
LOADING YOUR BOTTLE INTO THE HOLDER

Once your holder is attached, loading your Kuishi bottle is simple:

1. Use the Allen key to loosen the screws, and lower the base
2. Insert the bottle into the holder (pump removed), guiding the neck through the top hole and ensuring the base is tight to the bottle*
3. Carefully screw the screws back in, making sure they are tight
4. Reattach the pump, and you're done!

***To adjust the height of the holder to fit your bottle:**

Hold the bottle in place and lift the base until the bottle is firmly held (there should be no gap between the bottle and the base of the holder).



KUISHI CARE GUIDE

To keep your dispenser in good condition, we recommend cleaning it at least once a month.

Simply remove the bottle from the holder, unscrew the pump and gently wash inside and out with warm soapy water. Rinse and dry thoroughly to prevent soap spots.

Flush the pump with warm water to remove any clogs.

Gently wipe the holder using warm soapy water and a microfiber cloth. Avoid chemicals or abrasive cleaners as these may damage it.

SAY HELLO

ASK US A QUESTION

If you have a question about your Kuishi product, please get in touch with us at hello@kuishi.co.uk

TAG US TO FEATURE ON OUR INSTAGRAM FEED!

We'd love if you tagged us in a photo of your new Kuishi dispenser so we can see your beautiful space and share it with our followers. Tag us at [@kuishihome](https://www.instagram.com/kuishihome) to feature on our feed.

ARE YOU INTERESTED IN KUISHI PRODUCTS FOR TRADE OR WHOLESALE?

We offer trade and wholesale pricing for commercial businesses and shops. If you'd like to find out more, please get in touch with us at hello@kuishi.co.uk